

# LEG 10 - 4.7 MILES - MODERATE - FULL VAN SUPPORT

LEG 10 – 4.7 MILES – MODERATE

Edaville Family Theme Park  
5 Pine St, Carver, MA 02330  
41°50'42.28"N 70°46'22.49"W

1:45 PM-12:15 AM

The 'Frozen Chosen' will be selling food items at this exchange. Cash only.

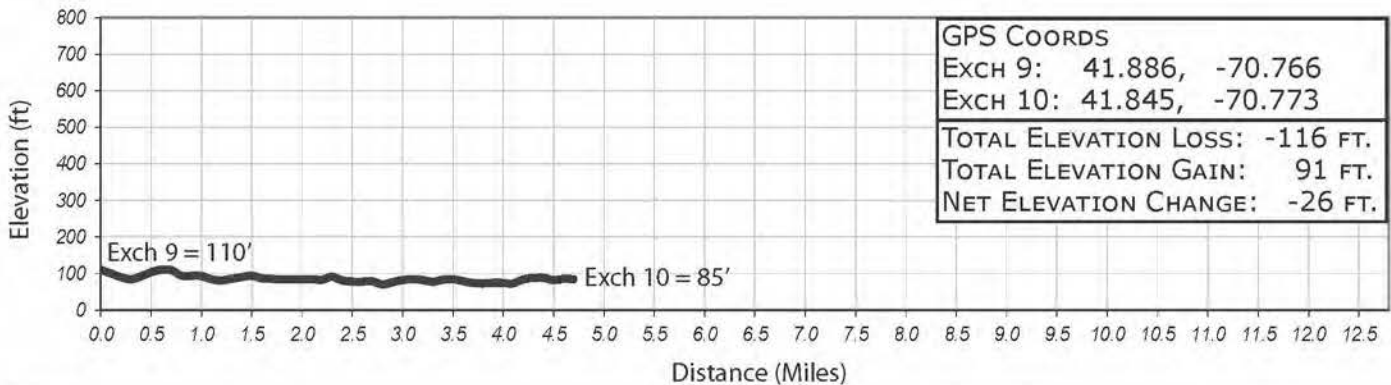
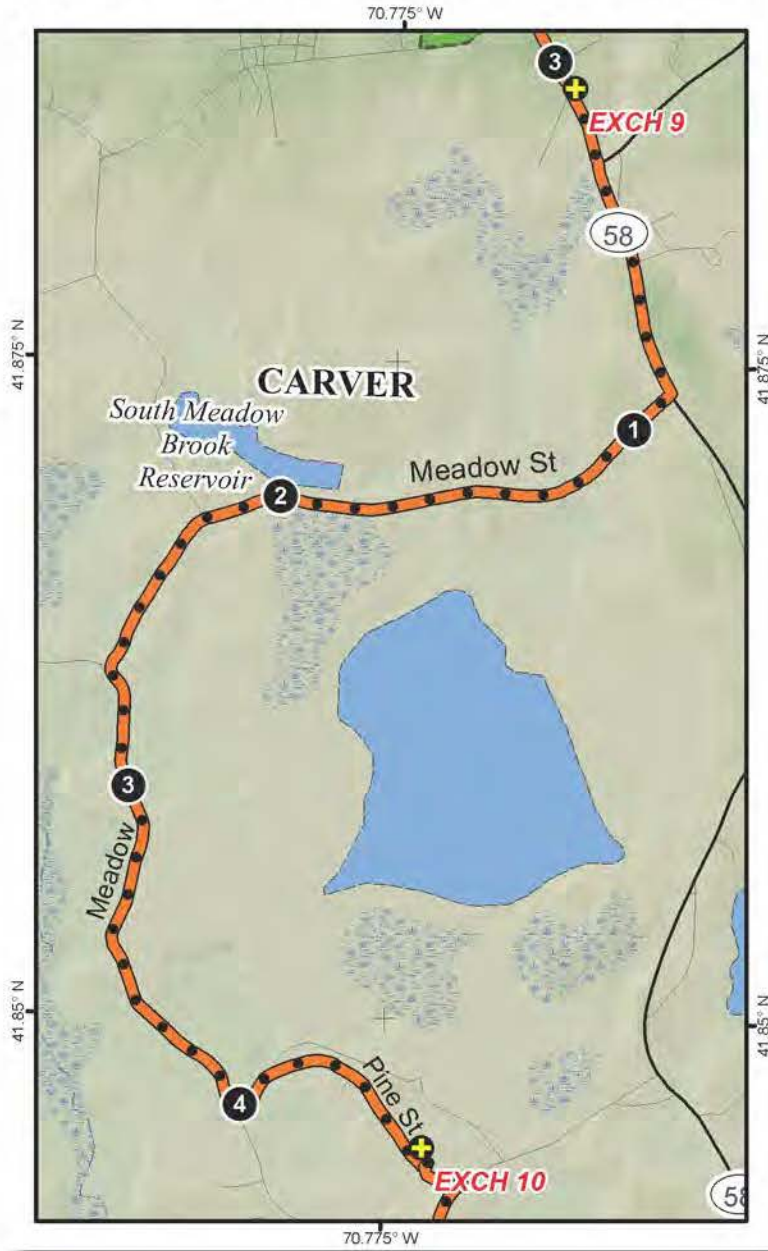
LEG LEGEND:

- 0.0 Depart exchange LEFT onto Main
- 0.8 LEFT onto Meadow St
- 4.0 LEFT onto Pine
- 4.7 Exchange is on the LEFT

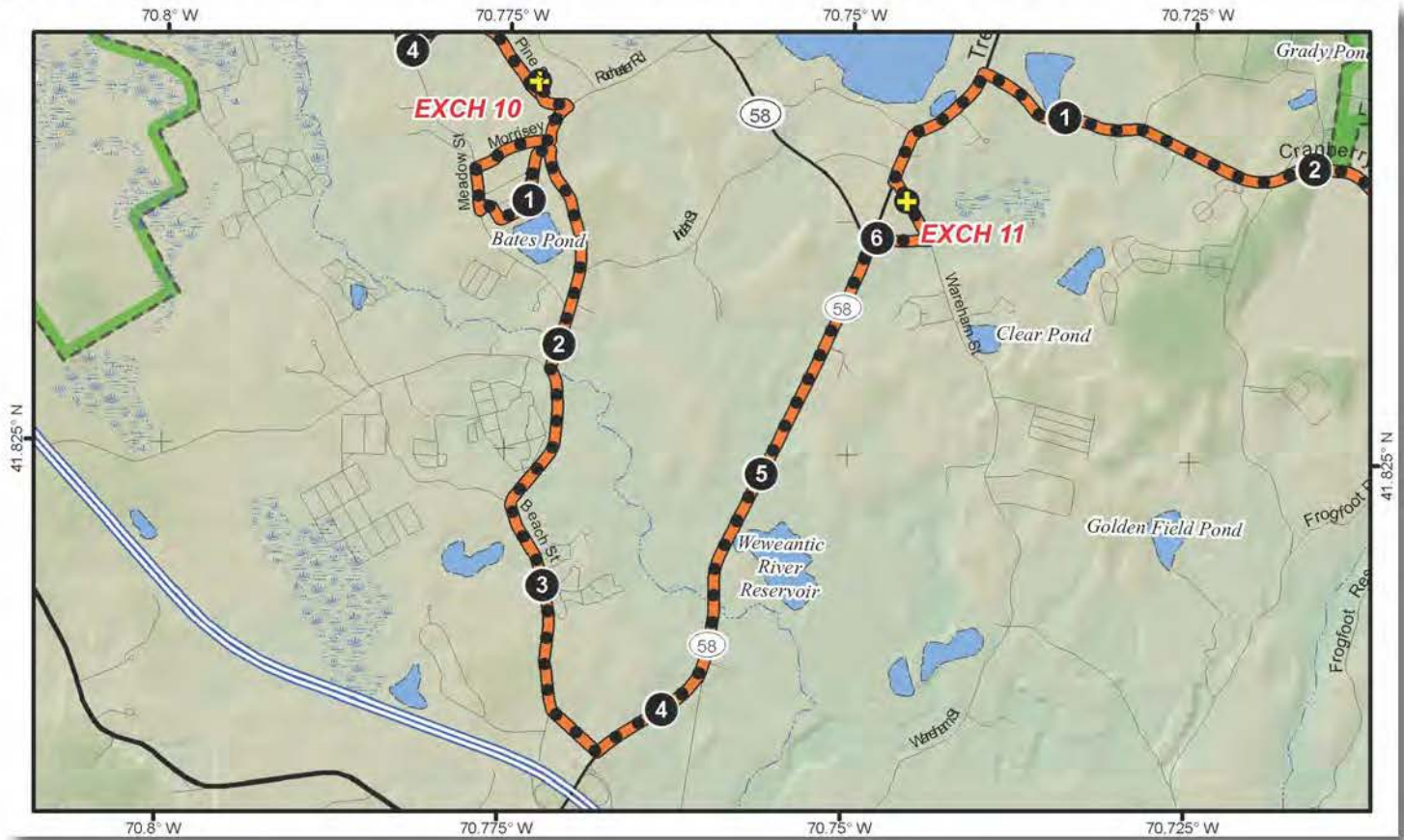
VAN ROUTE:

(Follow Runner Directions)

- 0.0 Depart exchange LEFT onto Main
- 0.8 LEFT onto Meadow St
- 4.0 LEFT onto Pine
- 4.7 LEFT into exchange 10



# LEG 11 -- 6.4 MILES -- HARD -- PARTIAL VAN SUPPORT



## LEG 11 -- 6.4 MILES -- HARD

Church of the Vine  
 5 Wareham St. Carver, MA 02330  
 41°50'20.28"N 70°44'45.23"W

2:15 PM – 12:45 AM

Please follow signs and directions of the police details carefully. This leg has a few segments where you will be running with traffic.

Continue straight on Rochester when runners turn right onto Morrissy.

## LEG LEGEND:

- 0.0 Depart exchange LEFT on Pine St
- RIGHT onto Rochester
- 0.25 RIGHT onto Morrissy Dr
- 0.6 LEFT onto Meadow
- 0.75 LEFT onto Bates Pond Road
- 1.2 RIGHT onto Rochester
- 2.1 LEFT onto East St.
- 2.7 LEFT on Beach St.
- 3.7 LEFT onto Main/Hwy 58
- 6.0 RIGHT onto Seipet St.
- 6.2 LEFT onto Wareham St.
- 6.4 Arrive at exchange on the LEFT

